

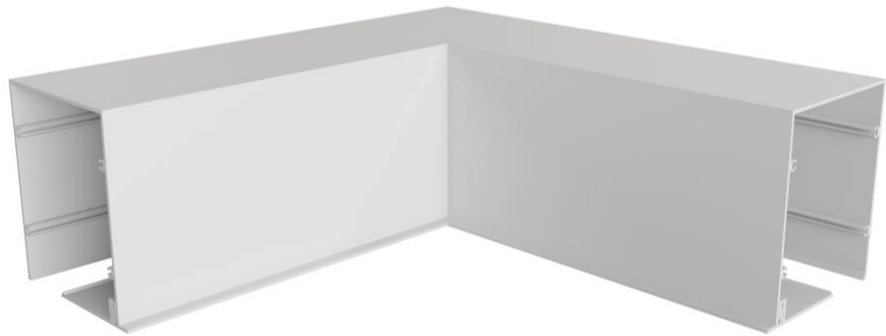
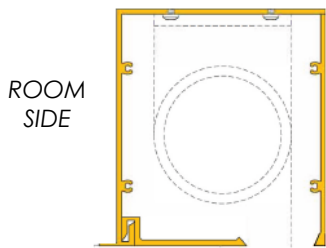
90 DEGREE MITRE FLUSHBOX CONFIGURATION OPTIONS

PLEASE USE CODES WHEN ORDERING

VA.FB.501B – 90 Degree INTERNAL Mitre Corner Section

FLANGE ON ROOM SIDE – BACK ROLL BLIND #

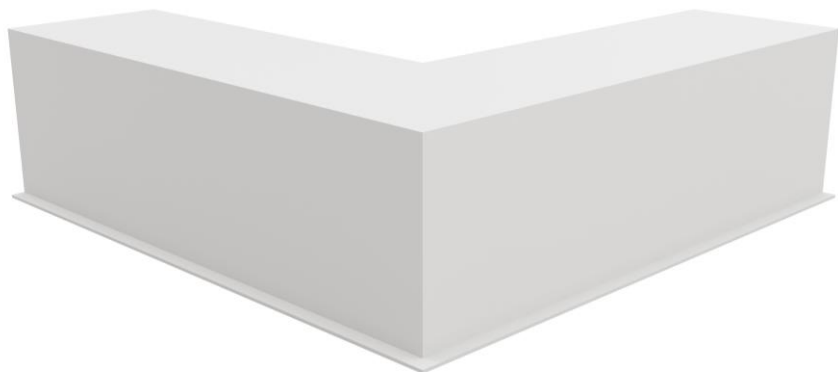
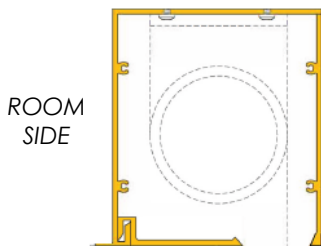
TO SUIT FULL FLUSHBOX VA.FB.100 (Single Flange)



VA.FB.504B - 90 Degree EXTERNAL Mitre Corner Section

FLANGE ON ROOM SIDE – BACK ROLL BLIND #

TO SUIT FULL FLUSHBOX VA.FB.100 (SINGLE FLANGE)



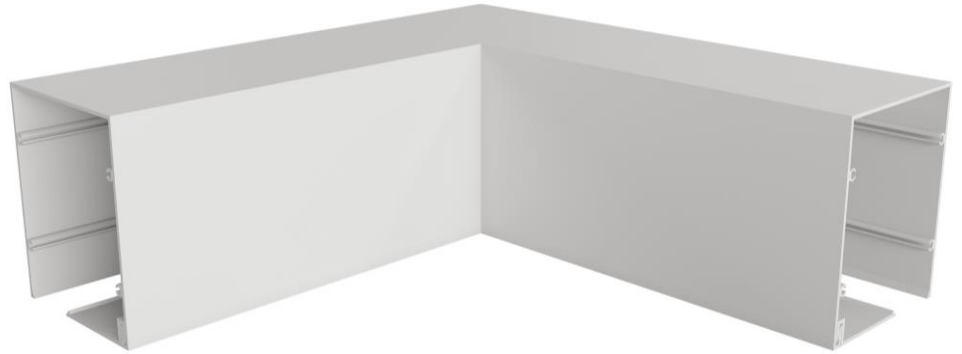
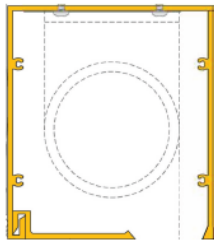
Back roll blinds at corner junction - feel free to enquiry about gaps between blinds at corner sections

VA.FB.502B - 90 Degree INTERNAL Mitre Corner Section
FLANGELESS BACK ROLL BLIND #

OR

VA.FB.502F - 90 Degree EXTERNAL Mitre Corner Section
FLANGELESS FRONT ROLL BLIND

TO SUIT FULL FLUSHBOX VA.FB.130 (FLANGELESS)

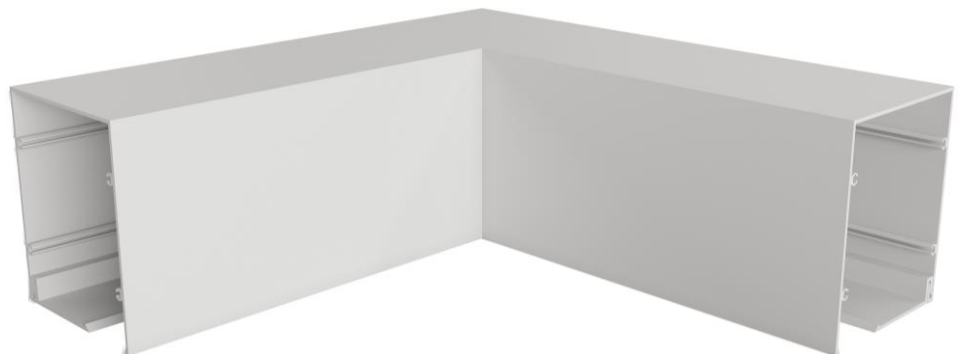
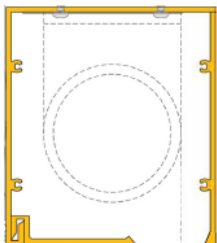


VA.FB.503F - 90 Degree INTERNAL Mitre Corner Section
FLANGELESS FRONT ROLL BLIND

OR

VA.FB.503B - 90 Degree EXTERNAL Mitre Corner Section
FLANGELESS BACK ROLL BLIND #

TO SUIT FULL FLUSHBOX VA.FB.130 (FLANGELESS)



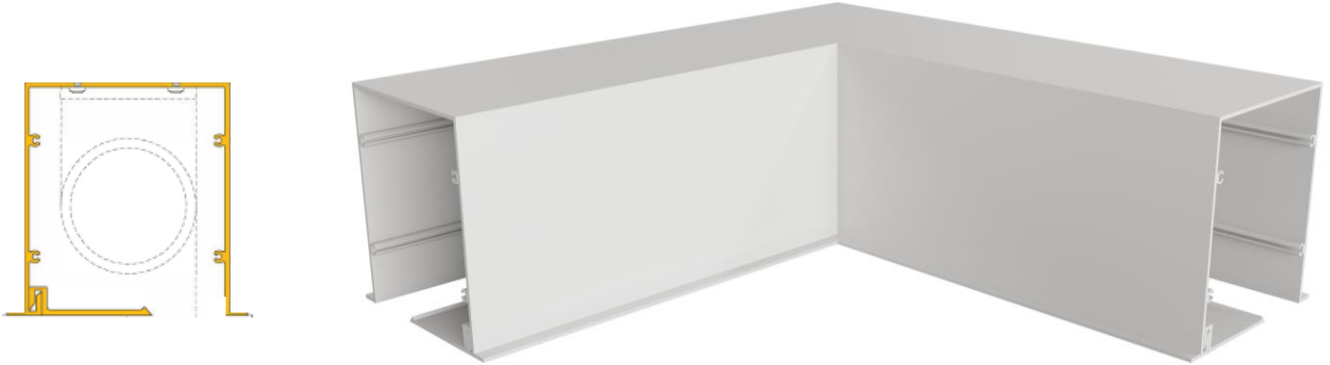
Back roll blinds at corner junction - feel free to enquiry about gaps between blinds at corner sections

VA.FB.506B - 90 Degree INTERNAL Mitre Corner Section
FLANGE ON BOTH SIDES – BACK ROLL BLIND #

OR

VA.FB.506F - 90 Degree EXTERNAL Mitre Corner Section
FLANGE ON BOTH SIDES – FRONT ROLL BLIND

TO SUIT FULL FLUSHBOX VA.FB.140 (DOUBLE FLANGE)



VA.FB.507F - 90 Degree INTERNAL Mitre Corner Section
FLANGE ON BOTH SIDES – FRONT ROLL BLIND

OR

VA.FB.506F - 90 Degree EXTERNAL Mitre Corner Section
FLANGE ON BOTH SIDES – BACK ROLL BLIND #

TO SUIT FULL FLUSHBOX VA.FB.140 (DOUBLE FLANGE)



Back roll blinds at corner junction - feel free to enquiry about gaps between blinds at corner sections